

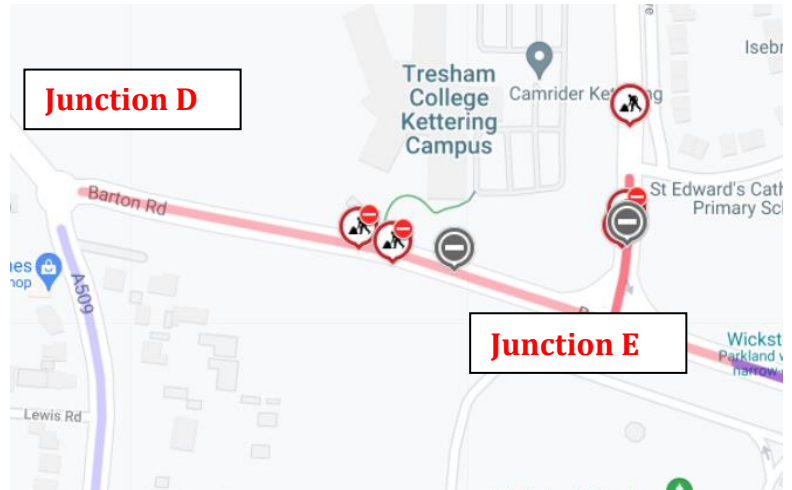
Start date of works – Saturday 16 October

Completion – Friday 11 March 2022 (Subject to variables)

Scheme type – Junction improvement works including carriageway widening, traffic signal upgrades, and carriageway resurfacing. Barton Road, Windmill Avenue and London Road/Pytchley Road.

Traffic management – Predominantly 3-way traffic lights with integrated pedestrian crossing points.

-Road narrowing - Junction D offline works
-Road closures for tree clearance/enabling works and for carriageway resurfacing.



Hours of work –

- Weekend closures 08:00 – 17:00
- Weekday working 08:00 – 17:00
- Weekday closures 20:00 – 06:00

Programme:

- Junction E – Oct 16 to Dec 2021 (Day time working)
- Junction D – Jan to Feb/March 2022 (Day time working)
- Resurfacing Junction D&E – Feb/March 2022 (Night time working)

What we are doing / the benefits – Northamptonshire Highways will soon start improvement works on Barton Road/London Rd roundabout and Barton Road/Windmill Avenue junction.

The works are split into 2 main areas – Junction D (Barton Rd – London Rd) and Junction E (Windmill Av – Barton road) as detailed in map above.

Works will include:

JUNCTION E

- Tree felling and preparation of a site in readiness for the first stage of highway improvement works.
- Carriageway widening on Windmill Avenue/Barton Road to construct designated left-hand turn lane onto Windmill Avenue and a designated left-hand turn lane.
- Drainage installation
- Traffic signal upgrade including new signals and ducting
- Footway reconstruction – Including tactile crossing points for sighted and visually impaired pedestrians.
- Fencing works
- Traffic island reconstruction

JUNCTION D

- Tree felling and preparation of a site in readiness for the first stage of highway improvement works.
- Carriageway widening area north of Barton Road / London Road junction
- Reconstruction of full size roundabout
- Traffic island reconstruction
- Drainage installation
- Footway reconstruction
- Traffic signal upgrade (Pytchley Road crossing)

JUNCTION D&E

- Carriageway resurfacing
- Ironwork replacement
- Road markings
- Gully cleansing

NOTE: Carriageway resurfacing and associated works are scheduled for **February / March 2022** following the completion of civil engineering works on both junctions D&E. These works will be completed using overnight road closures.

An additional information letter will be issued a minimum two weeks prior to these surfacing works to provide further updated information.

These works will increase highway capacity and assist with future traffic flows. We will also be increasing the structural stability of the road, which will reduce future maintenance works and improve safety for users.

Trees: The highway improvements at the intersection of London Road, Pytchley Road and Barton Road requires the removal of some trees.

A tree planting mitigation scheme is being produced which includes the planting of 115 new trees.

It is proposed that the trees will be planted following construction of the highway improvements, in the 2022/23 planting season.

This will be undertaken by a contractor on behalf of North Northants Council.

For more details, contact Rebecca Miller at rmiller@kierwsp.co.uk

Traffic management

When programming works, we consider the impact on all network users and plan our works to minimise disruption as much as possible. The majority of the works will be completed using traffic signal management. (3-way)

Road closures

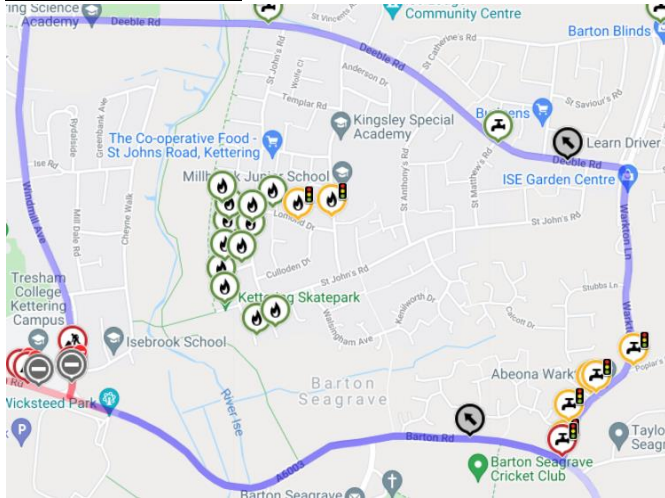
- Windmill Avenue closed Saturday 16, Sunday 17 and Saturday 23 October.
- Barton Road closed Saturday 24 and Sunday 24 October

Northamptonshire Highways only close roads when it is absolutely necessary to keep our workforce and road users safe. When Northamptonshire Highways close a road and put a diversion in place we must provide a diversion on a similar standard of road. The route, which will be clearly signed, is chosen to follow roads of a suitable standard and width to carry all traffic and avoid weight restrictions. We ask drivers to use this official route so as not to increase the impact on local communities.

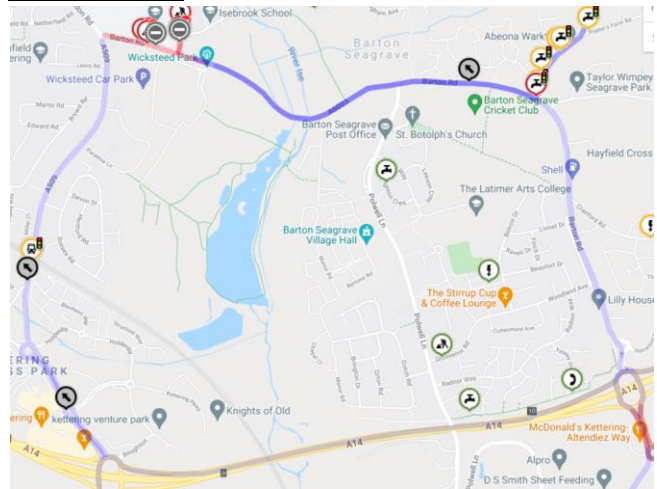
We do understand road closures are inconvenient, but works can only be completed safely and efficiently with them in place. We hope any inconvenience can be tolerated for the relatively short duration of the works.

Please see Road closure details (highlighted in **Red**) and Diversion routes (**Blue**) on maps overleaf:

Windmill Avenue



Barton Road



For diversion information please also refer to **one.network** and the news section on the website – **kierwsp.co.uk**. **Please allow additional time for your journeys.**

Information for residents and businesses

Access and egress to Wicksteed Park: Northamptonshire Highways is working closely with Wicksteed Park to ensure access is not disrupted, especially for major scheduled events. Extra measures will be put in place to manage anticipated increased pedestrian footfall.

Pedestrians and cyclists: Temporary controlled (push button) pedestrian crossings will be in place and pedestrian marshals will be on site to assist. This assistance will be increased on event days in the area. Cyclists will be required to dismount and use the designated walkways around work areas.

Public transport: During the weekend closures, there will be some disruption to bus routes **No. 16, 18, 18A, 47, 48, 49 & 50** commuting through Barton Road from Burton Latimer. The buses will follow a diversion set out by Stagecoach.

Stagecoach Midlands head office from 08:30 to 17:00 Monday to Friday.

Twitter: @StagecoachMids

Email: midlands.enquiries@stagecoachbus.com

Service 18/18A is operated by Go Whippet. info@whippet.uk.com

During the main works, buses will run as normal. Please allow for extra time for your journey as there may be some delays. Bus stops will not be served on the weekend closure dates.

Emergency services: We will maintain access and be able to hold traffic, when required to allow emergency vehicles through the traffic management.

Contacting us – to ensure we deal with all enquiries and defect reports correctly, please use our online public reporting service, Street Doctor. This process ensure issues are recorded and dealt with appropriately. Once reported, you will be issued with a unique reference number and able to follow the progress of your enquiry.

- Website: <http://www.northamptonshire.gov.uk/streetdoctor>
- For information and transport and highways updates follow us on [Twitter@nhighways](https://twitter.com/nhighways)
- To view road works and diversion routes go to one.network

If you need to talk to use about access please contact our Site Manager – Harry Fox 01604 883400